

# English language pathways

Improve your English language proficiency at The University of Queensland's award-winning English language centre, the Institute of Continuing & TESOL Education.

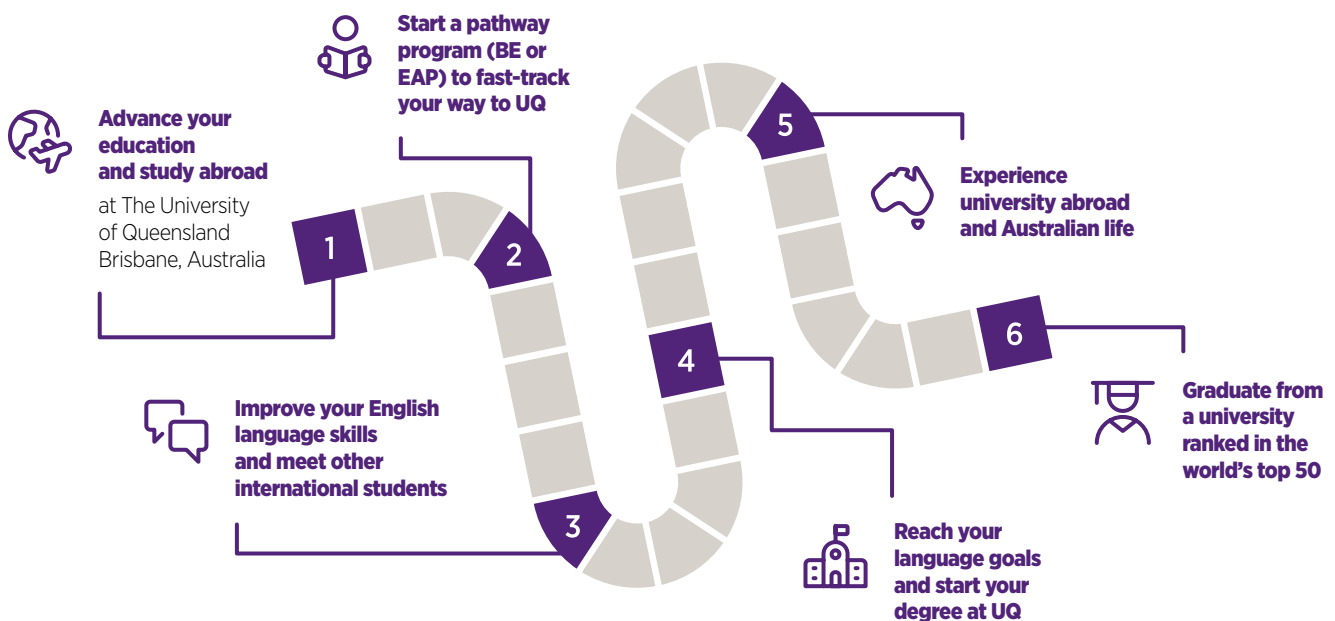


# English language pathways to The University of Queensland

If you meet all the academic requirements for entry to The University of Queensland (UQ), but need some help to achieve the English language entry requirements, you can apply for an English language pathway at UQ's Institute of Continuing & TESOL Education (ICTE).

You can apply for a UQ Package Offer\* that includes:

- an English language course to get you to the level you need for entry to your UQ program, and
- a conditional place in your preferred UQ program



\*To receive a UQ package offer, you must provide evidence of your current English language ability (IELTS or other recognised test) with your UQ program application.

## Pathway 1: Bridging English†

Bridging English (BE) is ICTE's most popular and flexible English language pathway with multiple entry points for admission into undergraduate and postgraduate programs at UQ, including Study Abroad.

The program provides you with the opportunity to reach your English language goals, develop your proficiency in all four skills (reading, writing, listening and speaking), as well as systematically building your range of vocabulary and control of grammar.

**Duration:** 10 to 30 weeks, depending on your English score and UQ program entry requirements

**Weekly tuition fee:** \$515

**Campus:** UQ St Lucia

**Minimum admission requirements:** IELTS 5.0 overall and 5 in each sub-band (or equivalent). Higher-level programs require higher IELTS or equivalent test score for entry.

### Choose BE if:

- you want to gain entry into a UQ program without having to sit an IELTS test at the end of your program
- you want to study with high-quality teachers in a program solely focused on helping you to gain entry into a UQ program
- you want to study with students who have the same academic goals
- you would like the opportunity for one-on-one consultation sessions to discuss your progress every five weeks and weekly progress reviews to ensure you are on track with your English language progress to reach your academic goals.

†Bridging English (BE) was formerly known as Bridging English Program (BEP)

## Within BE there are two study options:

### BE Advantage (recommended)

Choose BE Advantage to complete your assessment five to six weeks before the start of the UQ semester. If you have successfully completed BE, you can commence the Academic Communication Skills (ACS) course. If you do not succeed at the BE the first time, you can undertake the BE Extension.

### BE Standard

BE Standard finishes immediately before the start of the UQ semester. Due to time constraints, Academic Communication Skills (ACS) and BE Extension are not possible with this option. If you do not achieve your required English language score to enter your UQ program, you will need to defer the start of your degree until the following semester or take an approved test to demonstrate you meet the entry requirements. It is recommended that you only choose this option if you are unable to take BE Advantage.

## Benefits of BE Advantage

### Academic Communication Skills (ACS)

If you pass BE Advantage you are eligible to take ACS. This 3-week course will help you develop the academic language and skills that you need to be successful at UQ. You will also learn about living and studying in Australia, and meet other UQ international students.

### BE Extension

If you do not succeed at BE the first time, BE Extension provides an additional four weeks of tuition to revise and practise what you have learnt in the BE course. In the final week of the course, you will retake the official BE assessment. If you get the scores your UQ program requires, you will be able to start at UQ as planned.

## Entry dates and requirements

Listed below are the start and finish dates for both options, including the IELTS entry score into all BE courses.

For entry into a UQ program commencing Semester 2, 2020		BE Advantage		BE Standard	
Program	IELTS score	Start Date	End Date	Start Date	End Date
BE 30	5.0 overall, no score less than 5.0	30 Sep 2019	1 Jun 2020	4 Nov 2019	13 Jul 2020*
BE 25	5.5 overall, no score less than 5.0	4 Nov 2019		6 Jan 2020	
BE 20	5.5 overall, no score less than 5.5	6 Jan 2020		17 Feb 2020	
BE 15	6.0 overall, no score less than 5.5	17 Feb 2020		23 Mar 2020	
BE 10	6.0 overall, 6.0 minimum for writing, no other score less than 5.5	23 Mar 2020		27 Apr 2020	
Academic Communication Skills (ACS)		22 Jun 2020*	10 Jul 2020*		
BE Extension		15 Jun 2020*	13 Jul 2020*		

For entry into a UQ program commencing Semester 1, 2021		BE Advantage		BE Standard	
Program	IELTS score	Start Date	End Date	Start Date	End Date
BE 30	5.0 overall, no score less than 5.0	27 Apr 2020	14 Dec 2020*	8 Jun 2020	8 Feb 2021*
BE 25	5.5 overall, no score less than 5.0	8 Jun 2020		20 Jul 2020	
BE 20	5.5 overall, no score less than 5.5	20 Jul 2020		24 Aug 2020	
BE 15	6.0 overall, no score less than 5.5	24 Aug 2020		6 Oct 2020	
BE 10	6.0 overall, 6.0 minimum for writing, no other score less than 5.5	6 Oct 2020		9 Nov 2020	
Academic Communication Skills (ACS)		18 Jan 2021*	5 Feb 2021*		
BE Extension		11 Jan 2021*	8 Feb 2021*		

*\*Date subject to change*



“I recommend Bridging English (BE) for international students. It’s a great foundation for your academic study, as it helps you to adapt to life in Australia, and it is your first step to improving your English.”

Ye Wang, China | Bridging English student

## Pathway 2: English for Academic Purposes

English for Academic Purposes (EAP) has three levels of study – EAP I, EAP II and EAP III – and is available in five-week blocks of study throughout the year. EAP is also a pathway to UQ programs and can be offered through a UQ Package Offer (subject to IELTS or other recognised test results).

EAP helps you develop your academic English skills while preparing you for the academic IELTS test.

**Duration:** 5 to 30 weeks depending on your English score and UQ program entry requirements.

**Weekly tuition fee:** \$440

**Campus:** UQ St Lucia

**Minimum admission requirements:** IELTS 5.0 overall and 5 in each sub-band (or equivalent). Higher-level programs require higher IELTS or equivalent test score for entry. If you have an IELTS score from 4.0, ICTE can offer you a General English / EAP pathway into your UQ degree program.

### What you will study

Course materials build the English language proficiency that students need to enter university as well as the skills required to succeed.

#### IELTS Preparation

Get ready for the reading, writing, listening and speaking modules of IELTS by practising essential exam skills and language. Both textbooks and digital resources build vocabulary, speed and accuracy as you practise.

#### Academic Skills

- develop the skills and confidence you need to succeed as a university student in an English speaking environment
- increase your reading speed and comprehension, and learn to write in clear and logical sentences, paragraphs and essays
- communicate effectively in conversation and when giving presentations
- develop your ability to interact successfully by listening to natural spoken English.

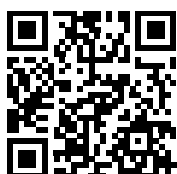
### Choose EAP if:

- you want to become more familiar with and prepare for the IELTS test with three days per week of dedicated IELTS preparation
- you want to combine preparation for the IELTS test with a focus on broader academic English skills
- you need an official IELTS test result for work or other purposes
- you do not have the IELTS score to enter BE, and you wish to study with high-quality teachers to improve your English proficiency for entry into a UQ program.

### EAP 2020 Course Dates

EAP is available in five-week blocks of study providing you with flexible entry points throughout the year. EAP provides the practise you need at a pace that suits you.

Session	Dates
1	6 January 2020 - 7 February 2020
2	17 February 2020 - 20 March 2020
3	23 March 2020 - 24 April 2020
4	27 April 2020 - 29 May 2020
5	8 June 2020 - 10 July 2020
6	20 July 2020 - 21 August 2020
7	24 August 2020 - 25 September 2020
8	6 October 2020 - 6 November 2020
9	9 November 2020 - 11 December 2020



For further information on this program, visit [icte.uq.edu.au/pathways](http://icte.uq.edu.au/pathways) or scan the QR code.

### Institute of Continuing & TESOL Education

The University of Queensland  
[enquiries@icte.uq.edu.au](mailto:enquiries@icte.uq.edu.au)  
[icte.uq.edu.au/pathways](http://icte.uq.edu.au/pathways)



ICTEUQ



icteuq



ICTE\_UQ



ICTEUniofQld



THE UNIVERSITY  
OF QUEENSLAND  
AUSTRALIA

CREATE CHANGE